

Techtube

Tools required

- Sharp insulation knife or insulation saw
- Tape measure
- Rule

Ancillary products

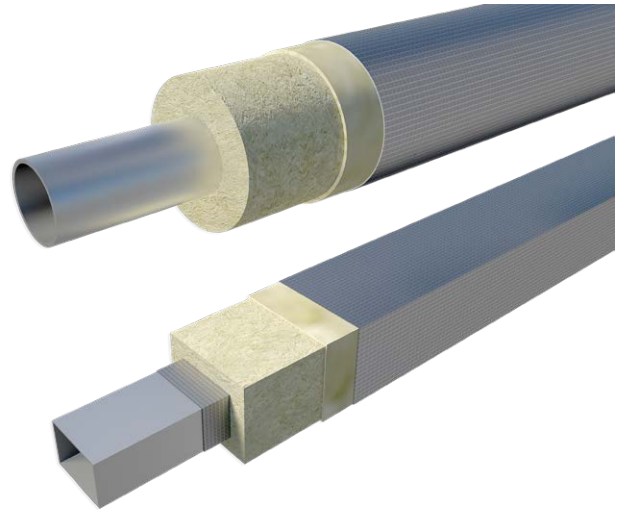
Self adhesive aluminium foil tape, aluminium bands

Fixing and application

Acoustic Membrane

ROCKWOOL Acoustic Membrane should be positioned outermost from the sound source and overlapped at all joints.

1. Techtube is a preformed section manufactured to suit the pipe diameter. The product is split and hinged for ease of installation.
2. Open up the Techtube section and place securely around the pipe.
3. Tape all joints with self adhesive aluminium foil tape.
4. Where adjacent sections abut, self adhesive aluminium foil tape to be applied to maintain integrity of the vapour barrier.
5. Secure sections with aluminium bands at approximately 200mm maximum centres.



Health & safety

The mechanical effect of fibres in contact with skin may cause temporary itching.



Cover exposed skin
When working in unventilated area wear disposable face mask.



Clean area using vacuum equipment.



Waste should be disposed of according to local regulations.



Rinse in cold water before washing.



Ventilate working area if possible.



Wear goggles when working overhead.